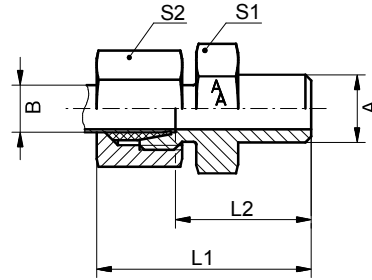


# Schweißverschraubungen

## Welded couplings

### ASV-L/S



Anschweißverschraubung, leichte + schwere Reihe  
Welded type, light and heavy duty series

Reihe / Series	A	B / Rohr / pipe	PN / bar	L1	L2	S1	S2	Art.Nr.
L	10	6	315	29,0	14,0	12	14	ASV06L
L	12	8	315	31,0	16,0	14	17	ASV08L
L	14	10	315	33,0	18,0	17	19	ASV10L
L	16	12	315	33,0	18,0	19	22	ASV12L
L	19	15	315	37,0	22,0	22	27	ASV15L
L	22	18	315	40,0	23,5	27	32	ASV18L
L	27	22	160	45,0	28,5	32	36	ASV22L
L	32	28	160	47,0	30,5	41	41	ASV28L
L	40	35	160	54,0	32,5	46	50	ASV35L
L	46	42	160	58,0	35,0	55	60	ASV42L

Reihe / Series	A	B / Rohr / pipe	PN / bar	L1	L2	S1	S2	Art.Nr.
S	11	6	630	34,0	19,0	14	17	ASV06S
S	13	8	630	36,0	21,0	17	19	ASV08S
S	15	10	630	39,0	22,5	19	22	ASV10S
S	17	12	630	41,0	24,5	22	24	ASV12S
S	19	14	630	45,0	28,0	24	27	ASV14S
S	21	16	400	45,0	26,5	27	30	ASV16S
S	26	20	400	51,0	29,5	32	36	ASV20S
S	31	25	400	56,0	32,0	41	46	ASV25S
S	36	30	400	62,0	35,5	46	50	ASV30S
S	44	38	250	69,0	38,0	55	60	ASV38S